

DESIGN & DETAIL

IW

NEW PROJECT_HOLLYS COFFEE, CABEL INDUSTRY, HANARO MART, SCANDINAVE LES BAINS VIEUX MONTREAL
CELEBRITY OF IW_MARCEL WANDERS STUDIO/VILLA MODA, WESTERHUIS BLITS, MONDRIAN IN SOUTH · BEACH
DESIGN VIEW_GUSTAV KLIMT IN KOREA 2009

77



9 4540

9 780957 702789

ISBN 978-89-5770-278-9

ISBN 978-89-5770-003-7(set)

Scandinave Les Bains Vieux Montreal

스칸디나브 레 뱅, 구몬트리올점

Design SAUCIER + PERROTTE ARCHITECTES
(www.saucierperrotte.com)

Design Team Gilles Saucier, André Perrotte,
Jean-Philippe Beauchamp, Anna Bendix,
Trevor Davies, Yves De Fontenay

Location Montréal, Québec, Canada

Function Spa

Built Area 1,000m²

Construction Société Desjardins-Larouche

Photograph Marc Cramer (www.marccramer.com)

Editor Choi Ji-hyun

설 계 사우시어 + 페롯 아키텍처

설 계 팀 질 사우시어, 안드레 페롯, 장 필립 보상, 안나 벤딕스,
트레버 데이비스, 이브 데 폰트네

위 치 캐나다 퀘벡 몬트리올

용 도 스파

면 적 1,000m²

시 공 소시에떼 데자르댕-라로슈

사 진 마르크 크레이머

에 디 터 최지현



Gilles Saucier 질 사우시어_Left
André Perrotte 안드레 페롯_Right

Profile

SAUCIER + PERROTTE ARCHITECTES

Founded in 1988 by Gilles Saucier and André Perrotte, Saucier + Perrotte architectes has gained international renown for its institutional, cultural, and residential projects. The firm represented Canada at the prestigious Architecture Biennale of Venice in 2004, and has been honoured with numerous awards, including 5 Governor General's Medals in Architecture and, in 2008, an International Architecture Award. Saucier + Perrotte's highly acclaimed buildings have been published the world over, reflecting the office's status as one of Canada's premier design firms. While continuing to add to its body of significant built work in Quebec and Ontario, the firm is also currently working in Alberta and Malaysia. In addition, Saucier + Perrotte has designed projects for Japan, China, and the Middle East. The office has also received the 2008 RAIC Award of Excellence for Best Architectural Firm in Canada (to be officially announced in April 2009).





Reception

Located in the heart of historic Old Montreal and facing the vibrant piers of Old Port, Scandinave Les Bains Vieux-Montréal is an urban spa whose purpose is to provide a thermal therapy experience that engages each of the body's senses. The building, rebuilt half a century ago after extensive fire damage, has housed warehouse functions until recently when it was acquired by the new owners: the new spa is positioned at the ground/entrance level.

The formal parti of the project is derived from the contact between hot and cold - and more specifically, the naturally occurring phenomena associated with these conditions - the design distills the idea of cool glacial forms and the warmth of volcanic rocks. White angular masses of glacial topography coupled with volcanic geology bespeak the duality that is central to the thermal therapeutic experience proposed by the spa. This duality is articulated through both the spaces' forms and the selection of various materials.

Upon exiting the dressing room, the visitor is immersed in a unique environment where walls, floors and ceiling are slightly angled according to a notion of interior topography through which visitors may wander. These angles, though subtle, give bathers a perceptual difference from their everyday environs; the awareness of the corporeal relationship with their surroundings is heightened, thus

grounding each visitor for that moment in time. Just as in a natural landscape, slight undulations in the ground plane create gentle slopes; depressions in the floor level generate basins of water for bathing. At particular moments, volumes emerge from the ground to sculpt interior zones for the sauna and steam bath. Uniting the main space is an undulating wood ceiling that echoes the movements of the floor: walls of white marble mosaic appear to melt at the point of contact with the warm-colored wood on the ceiling, resulting in accentuated architectural reveals. Heated, cantilevered benches made of black slate offer visitors a warm place to pause in between a hot and cold bathing cycle.

Opalescent glass has been added to admit natural light through the building's existing openings while providing a sense of privacy for the visitors. The light that permeates the bath area glows, adding to the purity of the space and the feeling of tranquility for the bathers while keeping contact with city life. Along de la Commune Street, a thin cascading layer of water flows on glass surfaces, filtering views so that from the exterior, passersby can see only shadowed silhouettes of the figures within the hot bath. Rounding out the holistic journey is a relaxation room where bathers can relax in rocking chairs or bean-bag lounge chairs.

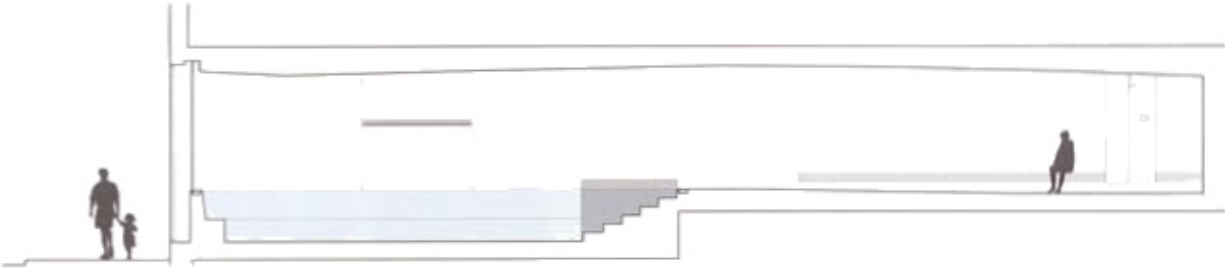


Cold shower booth view

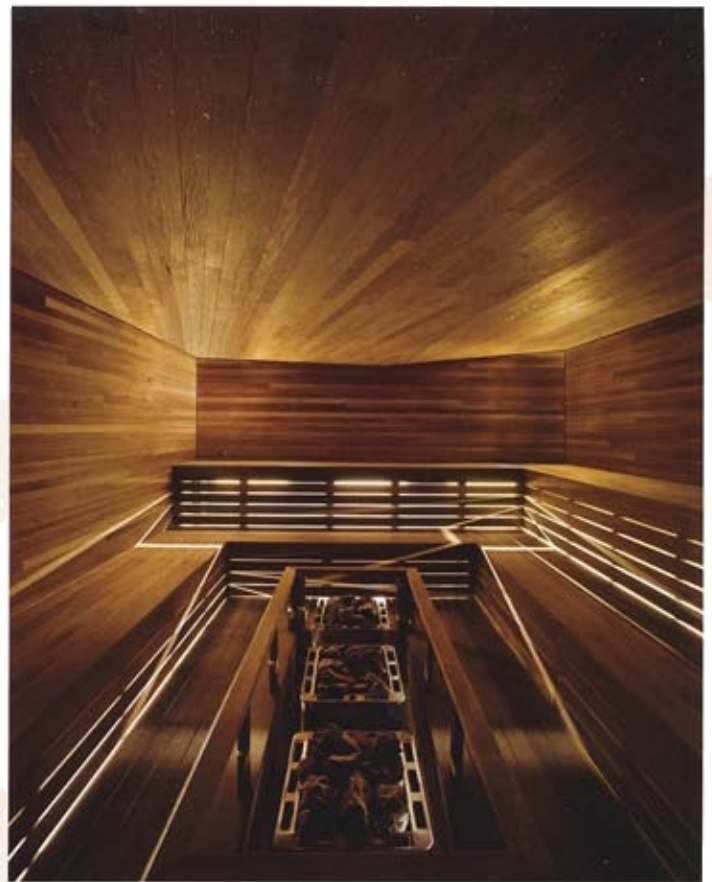




Hydro-jet bath



Section



Sauna



Floor plan

1. Hydro-jet bath
2. Cold tub
3. Cold shower
4. Steam bath
5. Sauna
6. Juice bar
7. Relaxation room
8. Dressing room
9. Reception
10. Office
11. Massage room
12. Staff's room



General juice bar view



Relaxation room



역사적인 구 몬트리올의 중심지에 위치한 스칸디나브 레 뱅은 온천 치료 체험을 제공하기 위해 계획된 도시형 스파 공간이다. 이곳은 온기와 냉기의 만남이라는 기본 개념 아래, 두 가지 요소의 대조적인 만남으로 일어나는 자연스러운 현상을 담아내고자 하였다. 이에 차가운 빙하와 화산암의 열기라는 발상을 설계에 적용시켜 공간의 형태와 다양한 재료를 통해 이중성을 표현하였다.

주 공간은 벽면, 바닥, 천장이 익간 기울어지도록 설계되었다. 비록 그 각도가 매우 미묘해 크게 인식할 수는 없으나 일상적인 환경과 전혀 다른 느낌을 주어 방문객들의 시선을 사로잡는다. 이는 지표면에 있는 막간의 굴곡으로 인해 완만한 경사가 생긴 것으로 지형을 그대로 살려내 인위적이기보다는 자연스럽게 다가온다. 또한 바닥면이 움푹 들어간 곳은 욕조가 들어가는 구역이 되고 바닥에서 덩어리가 튀어나오는 곳은 사우나나 증기 목욕을 즐길 수 있는 내부 구역으로 만들어졌다. 목재 천장에도 바닥면의 움직임을 그대로 반영하여 구불구불하게 제작되어 마치 자연 속에 들어온 듯한 느낌을 선사한다. 여기에 백색 대리석 모자이크로 마감한 벽면이 온화한 색조의 천장과 함께 부드럽고 편안한 환경을 제공해 스파를 즐기기에 적합한 공간으로 만들어준다.

기존의 건물 개구부에 있던 유백색의 유리는 자연광을 내부에 그대로 투과시켜 이용객들의 사생활을 보호함과 동시에 순수하고 고요한 분위기를 더하여 준다. 특히 외부와의 사이에 놓인 유리벽은 표면 위로 가느다란 폭포수가 흘러 내리면서 시선을 여과하고 외부에서는 사람들의 어두운 실루엣만을 보여주어 흥미로운 시선을 유도한다. 공간의 가장 안쪽에는 휴게실이 위치한다. 검은 슬레이트를 사용한 외팔보 형태의 의자, 흔들의자 등 여러 형태의 의자들이 놓여 있어 편안한 쉼을 위한 공간으로 완성되었다.