

CONCEPT

VOL. 127

International Magazine of Competition 竞赛设计 2007 November 2007

AUM&LEE ARCHITECTS ASSOCIATES

Special Issue Residence

UNStudio Dalian Football Stadium

Morphosis 41 Cooper Union Academic Square

Renzo Piano Il Vulcano Buono



National Music Centre _ Alberta, Canada

Saucier + Perrotte Architectes & GEC Architecture



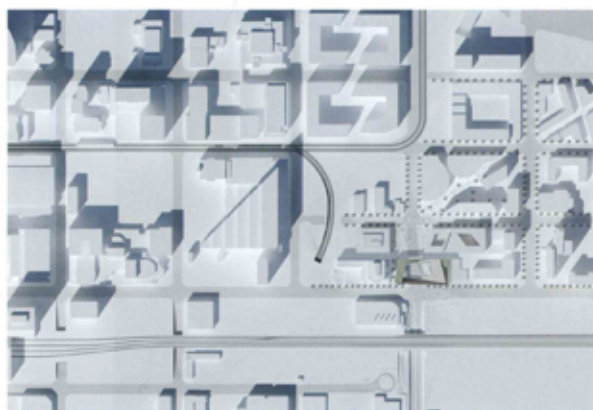
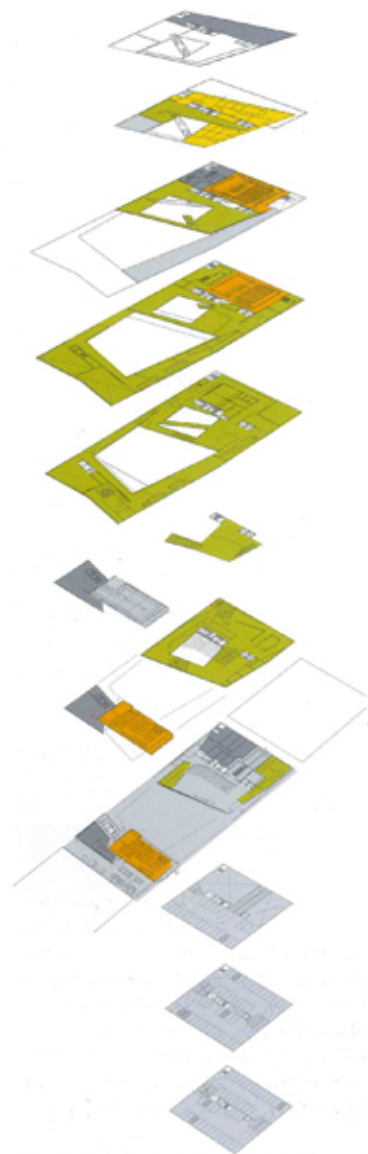
프로젝트는 킹 에디를 둘러싼 산맥, 강 등의 자연요소를 적극적으로 반영한 디자인이다. 디자인 초기에는 킹 에디의 형태를 개념적으로 도입했으나, 보완과 반복을 거듭하면서 공간에 역사성을 반영하는 디자인으로 발전되었다. 프로젝트 경로는 공간과 오브제를 반복하는 3차원 움직임이며, 이곳에서 방문객들은 킹 에디의 역사와 풍경을 유비쿼터스로 여행하는 교육적 체험을 할 수 있다. 외장 파사드 디자인은 음향에 대한 2차원적인 표현으로 음향의 작용방식을 가시화하여 외관사이인으로 처리한 것이다.

The design takes cues from the natural and urban morphology of its setting, including the mountains, the city centre, and the river. The idea of conceptually multiplying the form of the King Eddy was the initial starting

point for the design. Spaces evoking its shape are replicated and displaced throughout the project in order to reference its history. The building path becomes a three dimensional topography that links these replicated objects/spaces, so that the visitor experience is akin to a journey through a new landscape with the historic presence of the King Eddy becoming ubiquitous, felt throughout. The design and structure of the facades skin manifests in three dimensional terms of the sounds represented by the music we hear. Doing this is instructive to visitors in visualizing the way sound works and is also a signature treatment for the facade.

Written by Saucier + Perrotte Architectes & GEC Architecture

■ Plan Axis

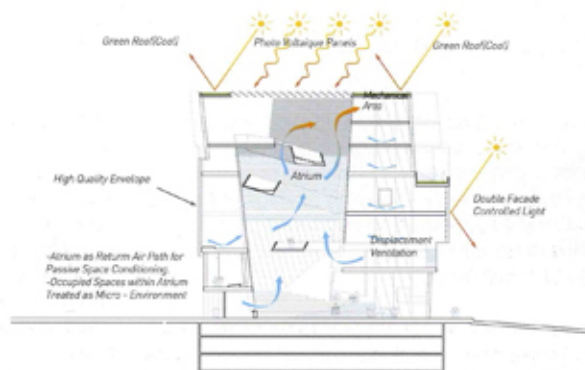


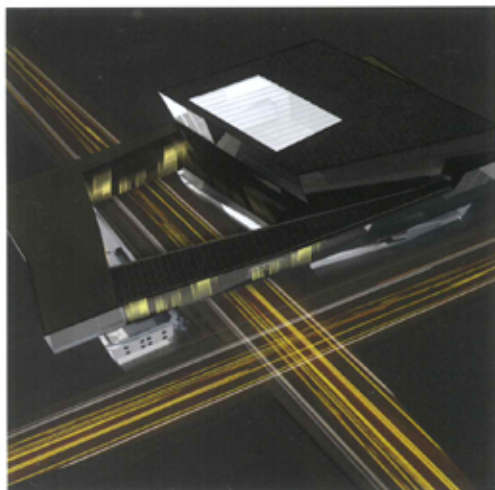
Site Plan

■ Atrium Path



■ Air Flow Section





Vehicle Diagram

Architects Saucier + Perrotte Architects with GEC Architecture

Project Team Mechanical, Hemisphere Engineering

Electrical, Stebricki + Partners

Acoustic & Audio & Visual Consultant, Anup

Lighting Designer, Anup

Performing Arts & Theatre & Studio Consultant, Anup

LEED Consultant, Enermodal Engineering

Code & Fire & Life Safety, Spithila & Associates

Client Cartes Music Foundation

District Calgary's East Village

Use Museum, Interactive Instrument Exhibition Spaces, Performance Spaces (Indoor and Outdoor Urban Spaces), Theatre, Grand Foyer and Interactive Reverberation Chamber, Lounge, Restaurant, Viewing Platforms, Administrative Offices, Instrument Repair Spaces

Site Area 1727m² x 543m²

Gross Floor Area 8,980m²

Bldg. Scale 2 Stories below Ground

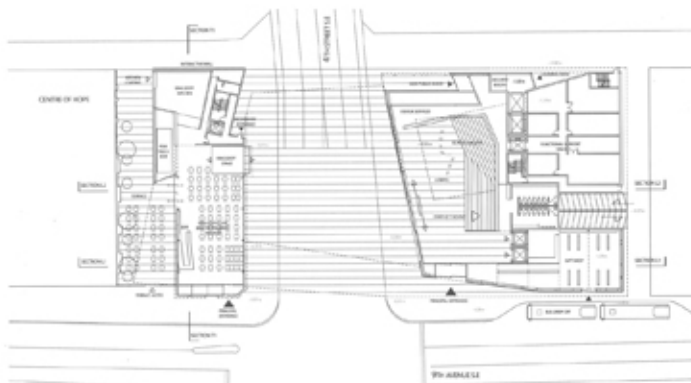
6 Stories above Ground

Structure Halcrow Yields

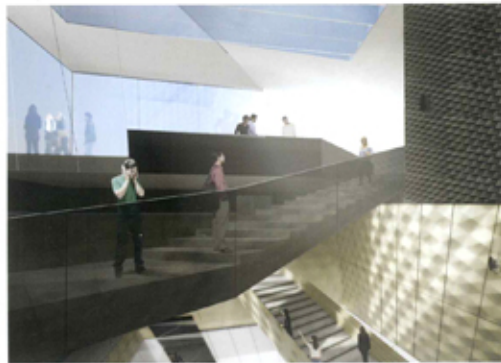
Max. Height 35.85m

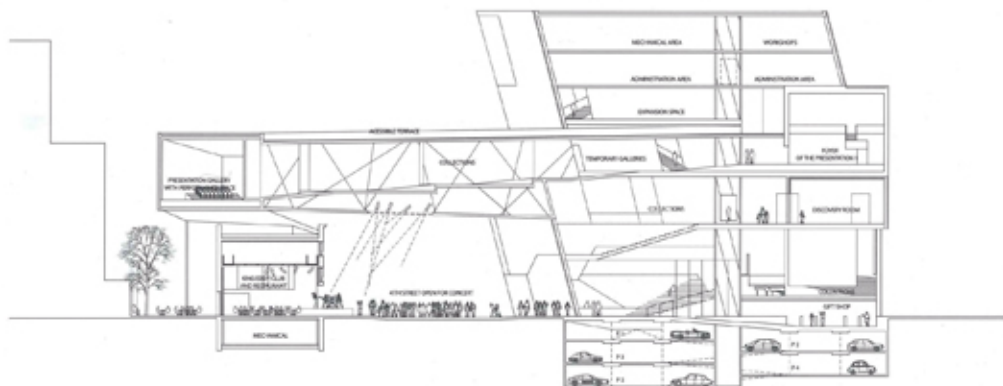
Parking Lot 102 cars

Exterior Finish Smoked Glass

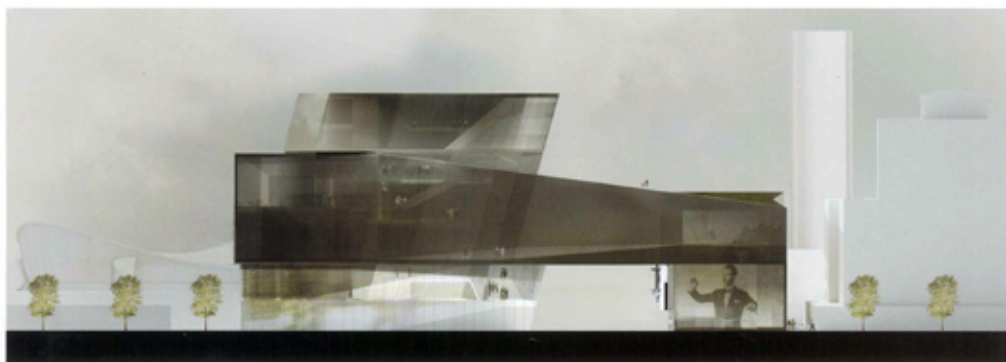


Level 1





Longitudinal Section



Elevation

